

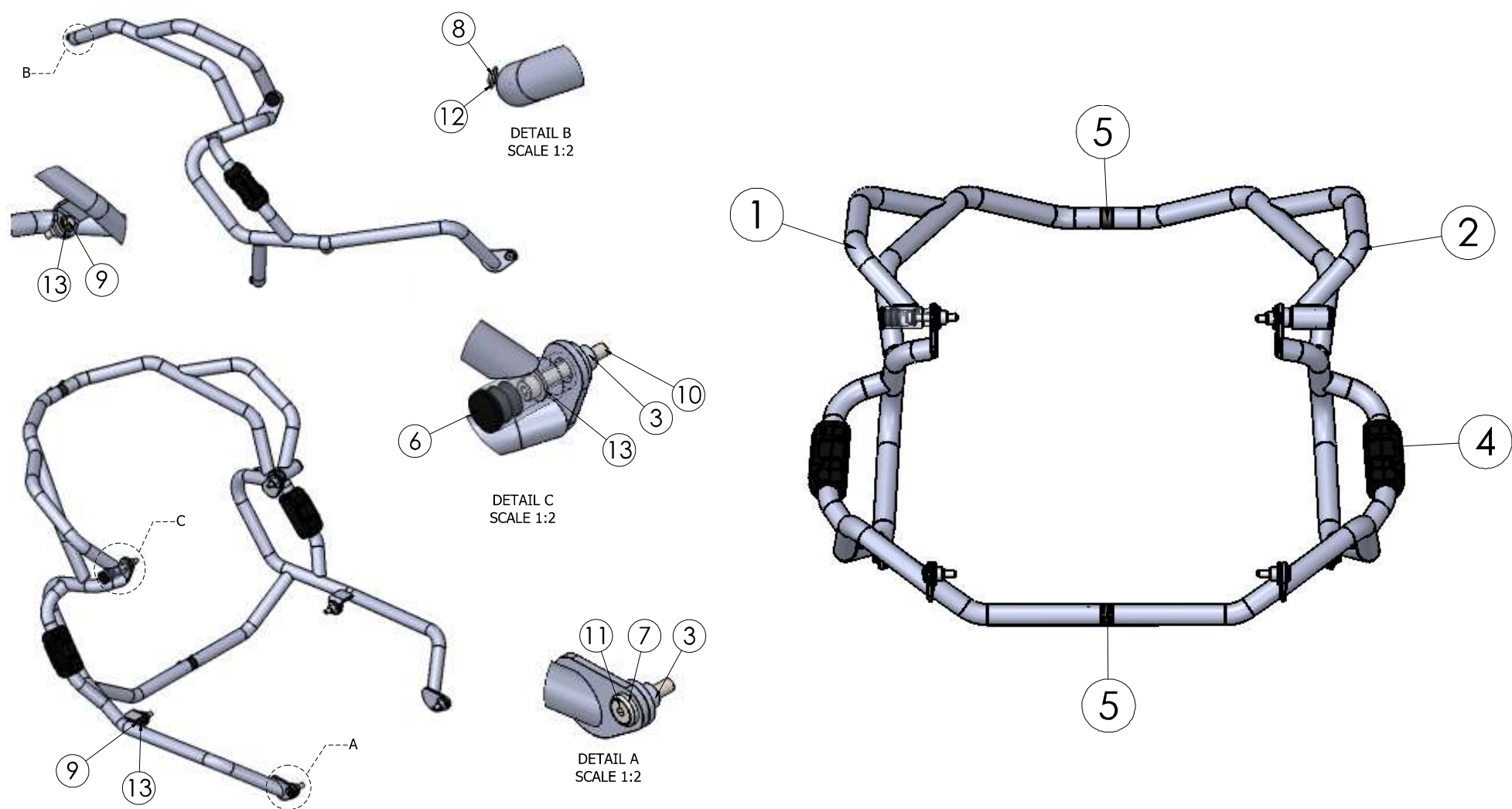
Scope of Supply/Bill of Material & Mounting Drawings

Part Number: H-X-ADV-21-17-01-SL / H-X-ADV-21-17-02

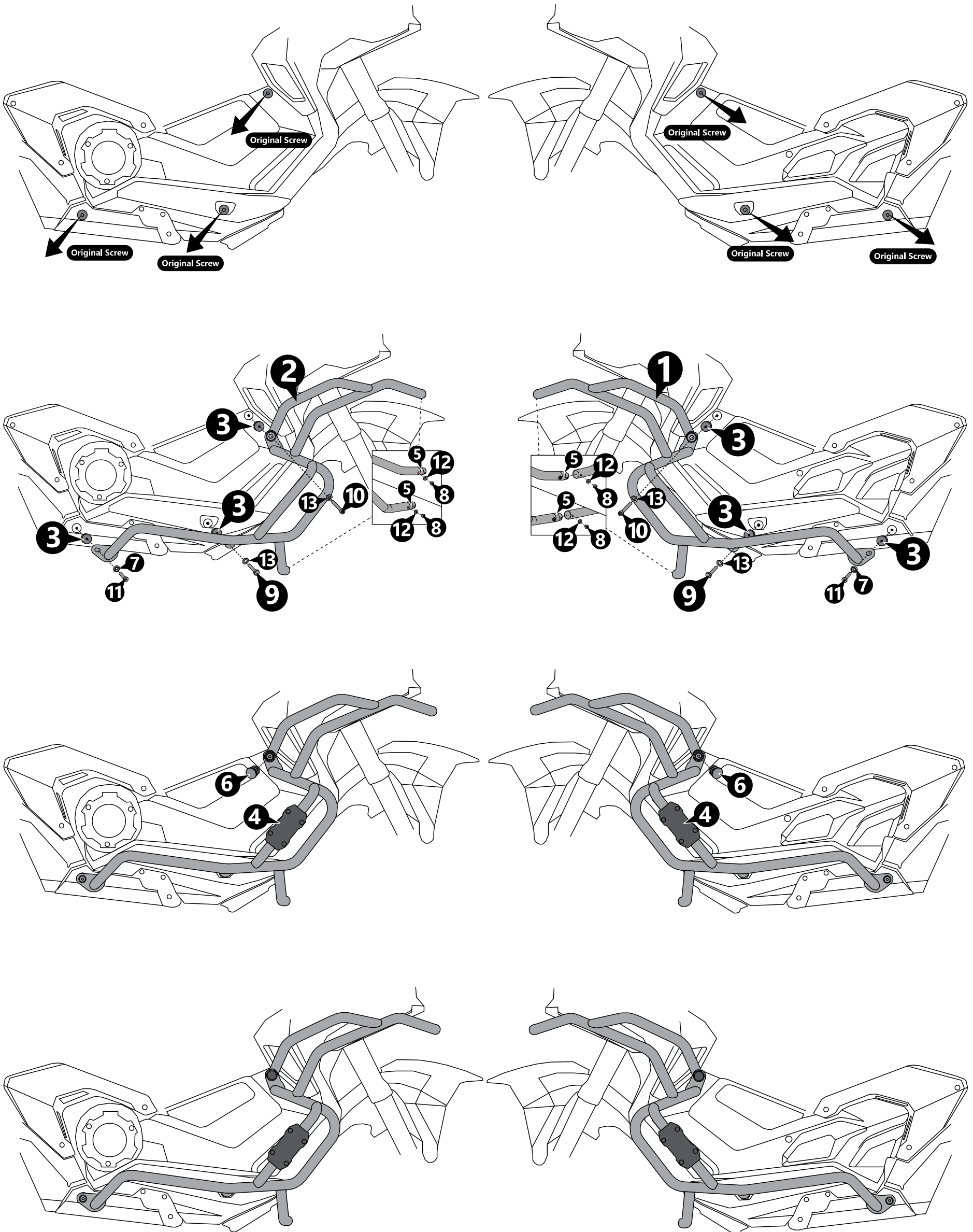
Part Description: Crash Bar – Honda X-ADV 750 2021

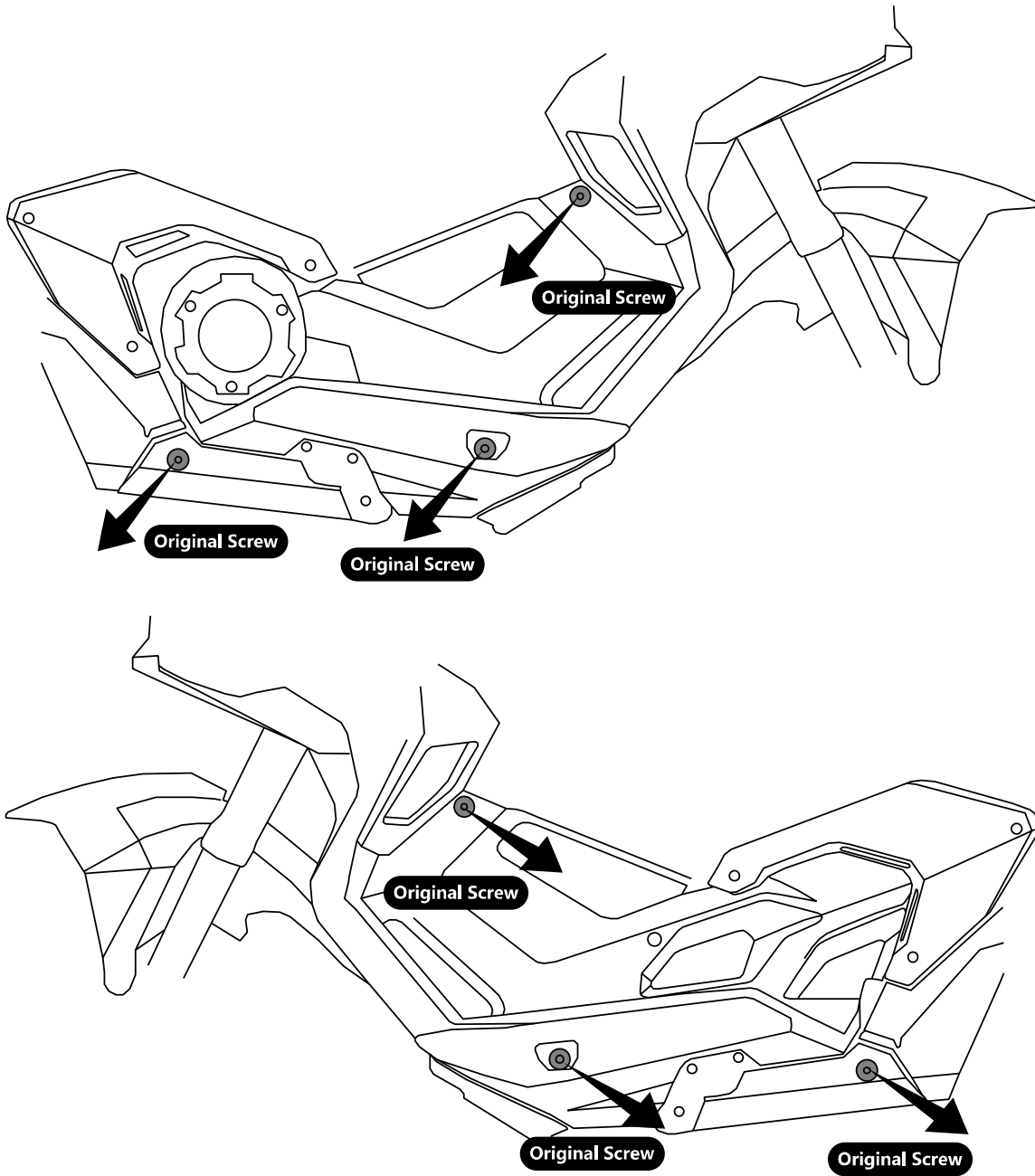
Installation / Parts List / Bill of Material for Mounting

NO.	Description	Quantity	Torque * (N-M)	Remarks **
1	Crash Bar LH	1		
2	Crash Bar RH	1		
3	Bush Flang	6		
4	Sliders Guards	2		
5	Joint pipe	2		
6	End cap	2		
7	Countersunk Washer M8	2		
8	Socket Button Head screw M6x15	4	9.6	Use Liquid Thread Locker
9	Hex screw gradeab M8x35	2	23	Use Liquid Thread Locker
10	Socket Head cap sc rew M8x55	2	23	Use Liquid Thread Locker
11	Socket countersunk Head sc rew M8x40	2	23	Use Liquid Thread Locker
12	Washer M6	4		
13	Washer M8	4		
SRC Design uses Metric System of Measurement and all dimensions in Millimeters				
* Recommended to use the Torque specified in the table				
** Denotes Usage of Liquid Thread Locker in specified Locations				



Mounting Drawings





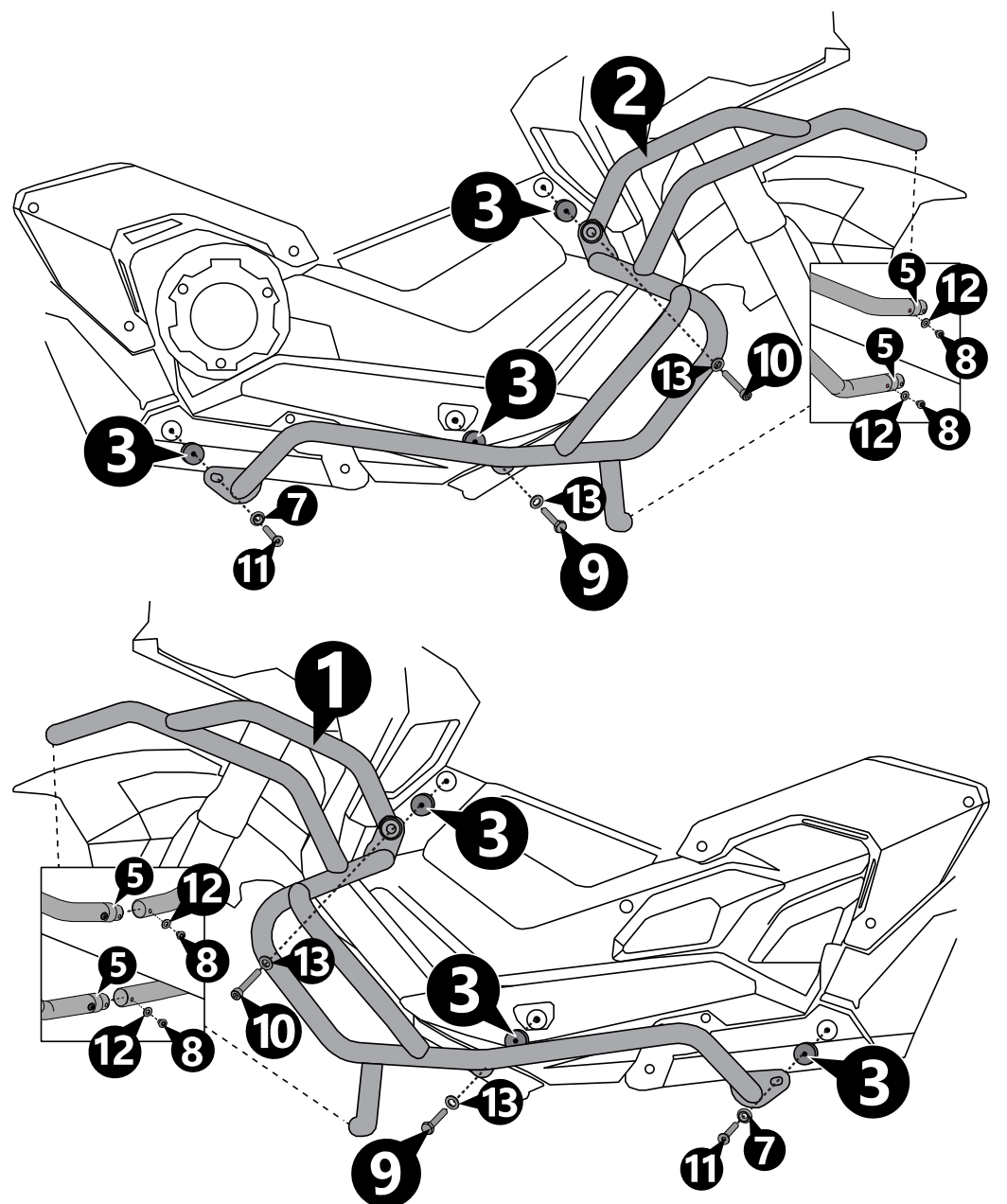
Step 1:

Remove the Original screws from frame.

Step 2:

Orient the Crash Bar and align it with the bottom side mounting hole in the Motorbike.

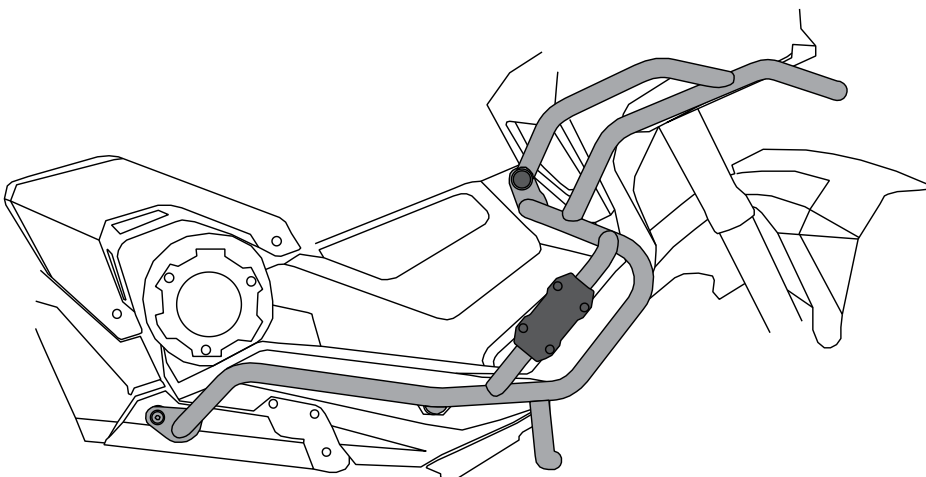
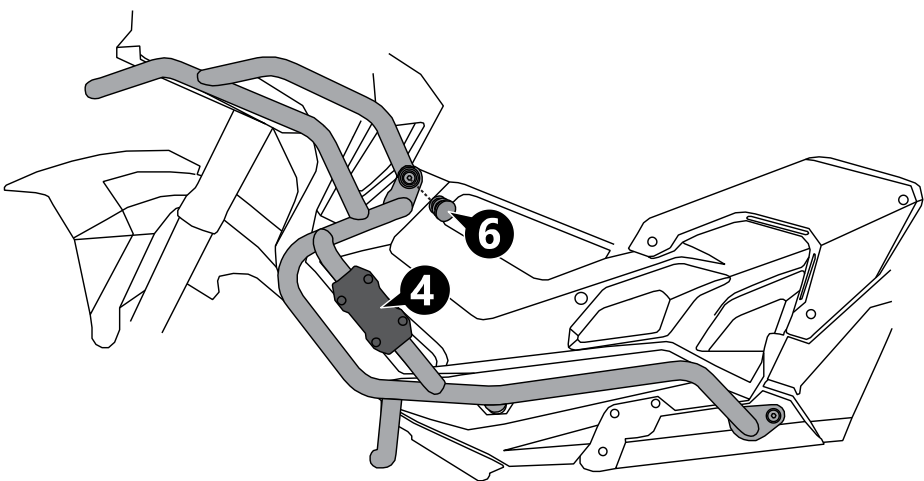
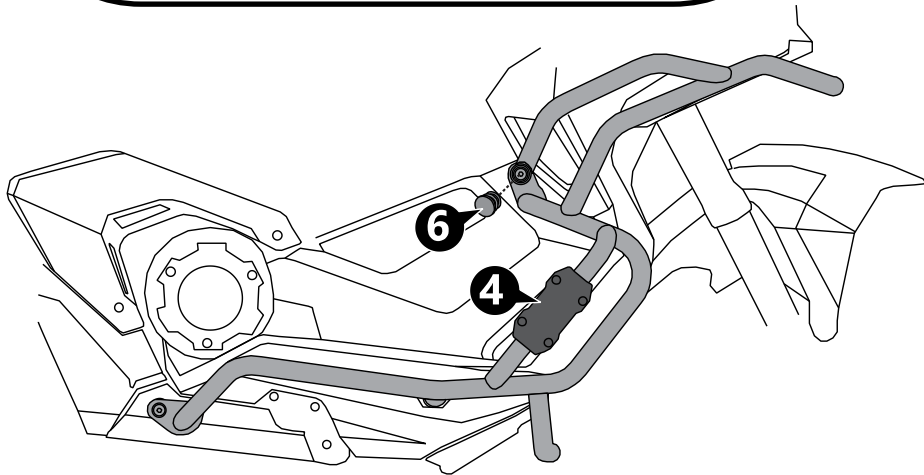
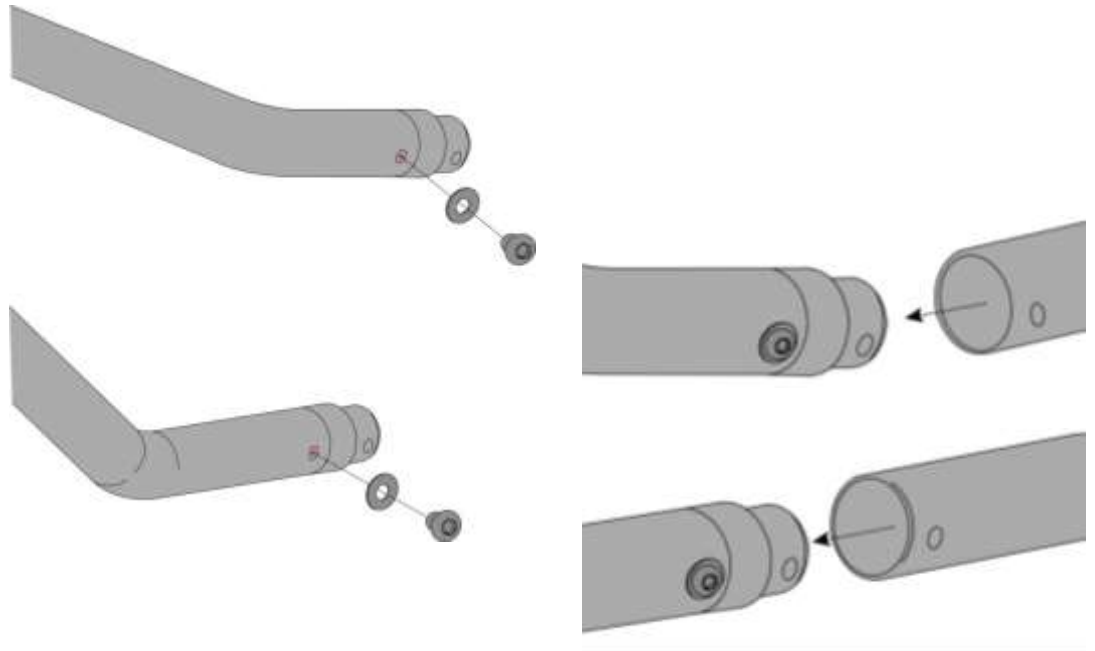
Slip-in the Flange Bush (3) – 3 off, Screw M8 x 35 (9) – 1 off and Washer M8 (13) -1 off, and Screw M8 x 55 (10) – 1 off and Washer M8 (13) -1 off, and Screw M8 x 40 (11) – 1 off and Washer M8 (7) -1 off, as shown (Before. no need to tighten the screws.)



Step 3:

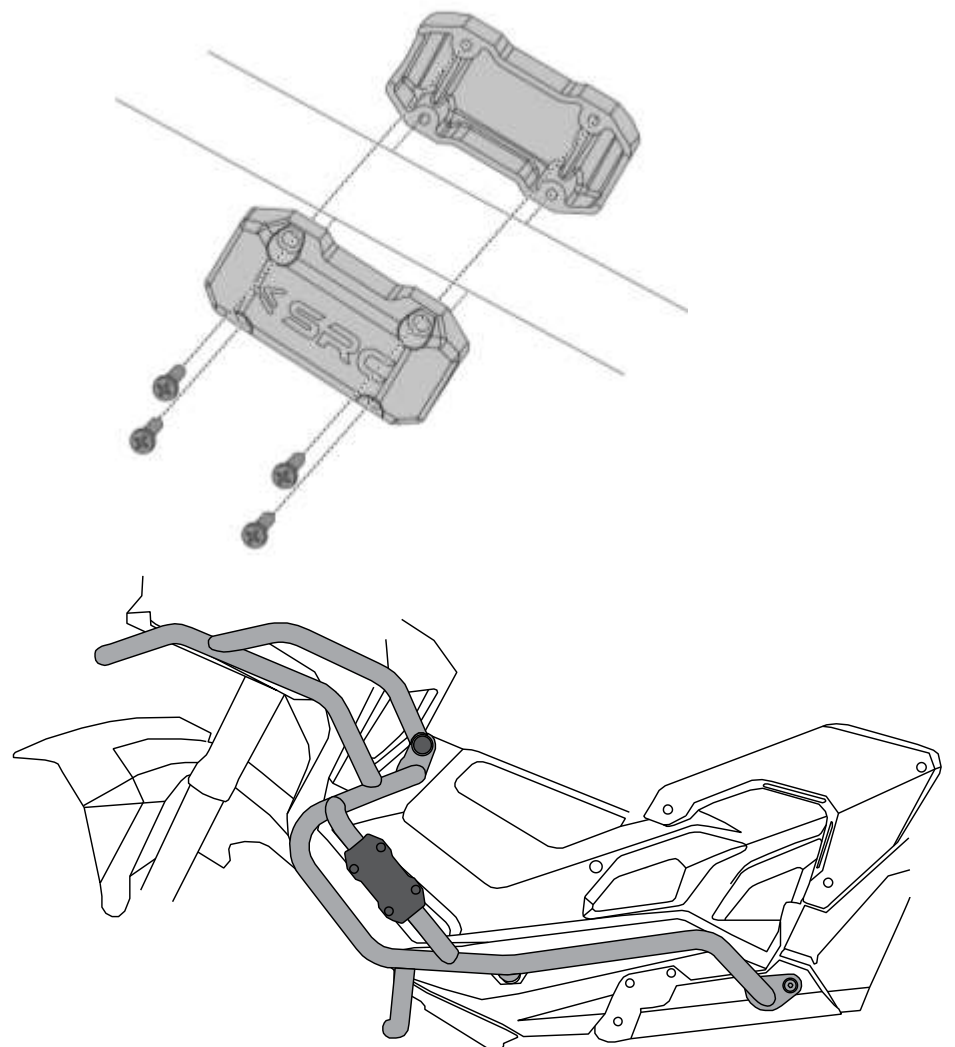
Mounting of Joint Pipe (5) on Top and Bottom side of the Crash Bar.

Slip-in the Joint Pipe (5) – 2 off, 1 each on Top side and Bottom side and slide-in M6 x 15 Cap Screw (8) and Washer M6 (12) – 4 off, on Top and Bottom side as shown



Step 4:

Assemble the Slider Bar(4)-2 off, on each of the Crash Bar, and End cap(6)-2 off, as shown.



General Information

1. We request you to pay attention to the Mounting Instructions in this document and follow the step-by-step procedures.
2. This Mounting Instruction manual is a “Do It Yourself” (DIY) fitment manual of the Accessory part to the Vehicle. We have prepared this based on our experience and knowledge, related to the Vehicle, Part and its functional aspects.
3. SRC cannot guarantee the interchangeability of the parts to any other manufacturer’s accessory part. It is advised to the User, to inspect and ensure the original state of all other Vehicle parts.
4. We request you to bear in mind, that the Installed part can change the driving behaviour and/or the stability during driving or any other dynamic conditions.
5. If you have the appropriate tools and another person to assist you in the mounting, it will help.
6. To the maximum extent possible, our design use the current Mounting/Fitment of the Original Equipment, so that Installation of these accessories will not affect the Payload or Function of the Vehicle or the Part on which it is mounted to protect it
7. If any additional modifications are to be done, prior to the fitment of the accessories, it will be explicitly specified in the instruction sheets.